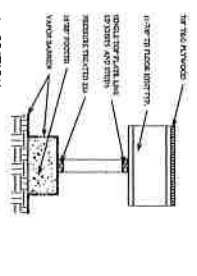


① FOUNDATION
1/8" = 1'-0"

FOUNDATION GENERAL NOTES

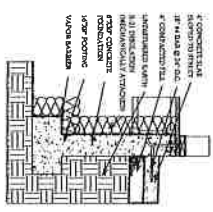
- EXHIBIT 18" #4 BARS @ 24" O.C. INTO FOUNDATION WALL AT ADJACENT SLABS ON GRADE
- CONTRACTOR TO VERIFY ALL WINDOW AND DOOR DIMENSIONS PRIOR TO PLACEMENT OF CONCRETE FOR PROPER PLACEMENT OF ALL HOLD DOWNS AND FOUNDATION VENTS IN STEM WALL
- INSTALL MIN. 1/2" ANCHOR BOLTS AT 6" O.C. AND 1/2" FROM CORNERS, AS PER CODE, ON TALL WALL LOCATIONS, I.E. RV BAY, INSTALL AT 4' O.C.
- CHECK SEER PLAN FOR PLACEMENT OF ANCHOR BOLTS, CONCRETE STRAPS, AND REBAR LOCATIONS.
- GRAVEL SPACE ACCESS MINIMUM 18" X 24". CONTRACTOR TO VERIFY IDEAL PLACEMENT TO AVOID CUTTING JOISTS.

PONY WALL DETAIL



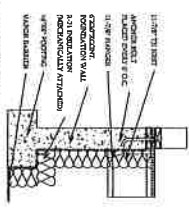
② A3-SECTION 2
3/8" = 1'-0"

TYP. FOUNDATION DETAIL I



③ A3-SECTION 3
3/8" = 1'-0"

TYP. FOUNDATION DETAIL II



④ A3-SECTION 4
3/8" = 1'-0"

HOLD DOWN SCHEDULE

M.A.R.T.	DESCRIPTION
1	1/2" ANCHOR BOLT
2	1/2" ANCHOR BOLT WITH WEDGE BUSH AND 1/2" ANCHOR PLATE WITH 1/2" ANCHOR BOLT
3	1/2" ANCHOR BOLT WITH WEDGE BUSH AND 1/2" ANCHOR PLATE WITH 1/2" ANCHOR BOLT

TRESIDIO
07/16/25

1299 W. MANAGER RD.
SIT. 200 NO. 1078013
PHONE: 208.217.2280

VISTA RV
1421 N. GLEN ASPEN AVE.
STAR, ID 83669

REVISION SCHEDULE

NO.	REVISION	DATE

LAKE POINTE 27-2

NO.	REVISION	DATE

FOUNDATION
A2